

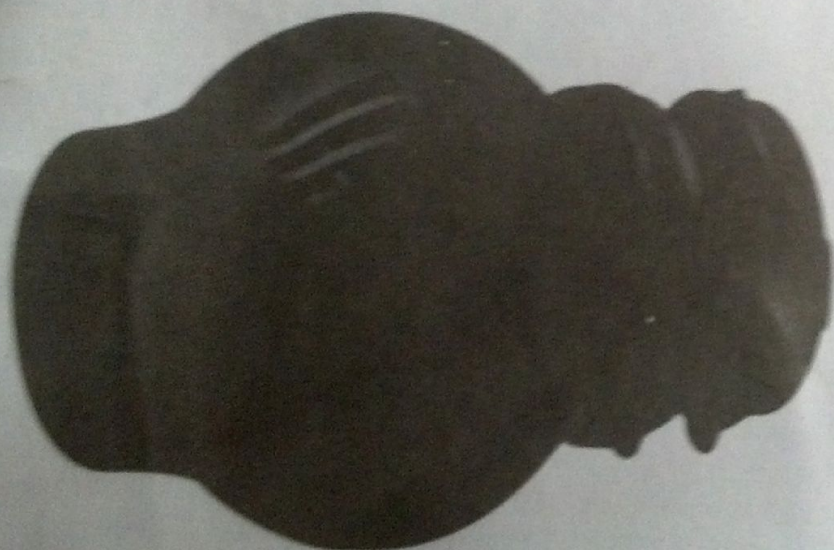
Jebao®

捷寶

WP25 WP40 Wave Maker

This wave maker is intended to simulate the natural waves and whirlpools found in a marine environment.

Before installing and using the pump, please read through these instructions to familiarise yourself with the correct operation of the device.



Features:

- Maximum flow rate of up to 13,000 litres/hour
- Unique multi mode controller to allow adjustment of the wavemaker to suit the users requirements.
- Use of low-voltage, low power, DC variable-speed pump, minimizing heat transfer to the aquarium and maximising user safety.
- Easy to use controller
- Adjustable pump housing so pump flow direction can be easily altered
- Wide voltage input (AC100 - 240V 50/60Hz)
- Can be used in a variety of aquarium sizes. Suitable for aquariums with glass up to 15mm thickness.

Package Contents:

- Wave maker pump
- Intelligent controller
- AC/DC adapter
- Mains power cord
- Light sensor (very small) and double sided tape for mounting controller.

IMPORTANT INFORMATION:

- In order to ensure product performance, please only operate the pump in water.
- The controller is NOT waterproof - please position the controller to avoid water splashes.
- Please take care whilst fitting the magnets to the glass.
- If the Controller or AC/DC adapter are opened, the warranty will be voided.
- The Wave maker is suitable for indoor use in water only. The motor in the wave maker will be damaged if it is run dry.

Installation Instructions:

Every user's tank is unique, so the wavemaker should be installed based on your tank's style and your requirements.

Ideally, the wavemaker should be placed opposite a flat glass surface (without a overflow or any irregular glass) in order to gain the greatest effect of reflecting waves. This is usually best accomplished by positioning the wavemaker on a side wall pointing to the opposite side wall (rectangular tank).

When the wavemaker is running at full power, it has a flow rate of 13,000 litres hour, so please avoid placing the wavemaker too low which will causing a vortex on your sand bed, disturbing the sand, and also avoid placing too high as this will cause air to be sucked in - we recommend a depth of at least 15cm for the wavemaker.

- Remove the magnet from the pump to install the pump in the aquarium in the desired location. Place the rubber suction cup suction cylinder onto the inside wall of the aquarium. Then position the rear magnet plate (with attached rubber damper) to the outer wall of the aquarium. Please take care when positioning the magnet as the magnets are very strong and could trap your fingers.
- Remove the backing on one side of the double-sided adhesive paper and stick to the rear of the controller in the middle. Remove the other side of the double-sided adhesive protective paper and affix the controller in a suitable location.
- **BEFORE ATTACHING THE MAINS CABLE**, attach the 3-pin waterproof connector from the pump to the controller. If required, gently insert the light sensor into the small socket on the left of the controller. Connect AC/DC power adapter to controller. See images below:

Waterproof Pump Connector



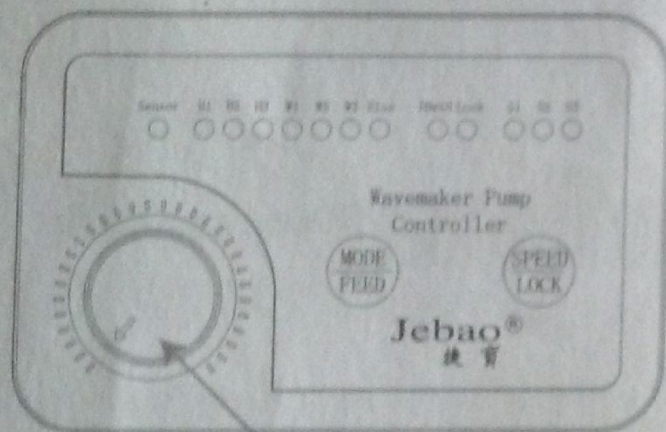
Light Sensor Socket



DC power Socket



Once all connection are made, the mains power can be connected with the provided mains power cord.



Wave duration adjustment

Controller Operation:

The controller has six modes which can be used. Pressing the "MODE" key will cycle through the modes until the desired mode is selected.

Below are details of the 6 modes available:

- H: High, constant, non-variable flow (13,000 LPH)
- L: Low, constant, non-variable flow at a third of the speed (4,300 LPH)
- W1: Adjustable pulses at maximum flow rate. Adjust the controller wave duration knob to change the duration (left decrease, right increase) of the pulses and vary the size of the wave according to your tank. When the duration is set correctly, you will create a back and forth motion and form a gentle standing wave in your tank.

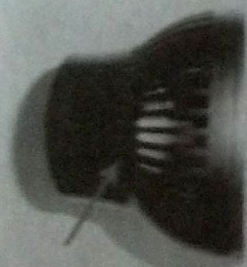
- W2: The wave maker speeds up from a low flow rate to the maximum flow rate in 6 steps and slows down similarly. This creates a varied flow pattern. Adjusting the controller wave duration knob will cause the duration of the individual steps to be lengthened/shortened. Adjust to form the wave best suited to your tank.
- W2: The wave maker speeds up from a low flow rate to the maximum flow rate in 6 steps and slows down in 8 steps. This creates a varied flow pattern. Adjusting the controller wave duration knob will cause the duration of the individual steps to be lengthened/shortened. Adjust to form the wave best suited to your tank.
- Else: Reef Stream Mode, a random flow cycle that randomly increases and decreases pump speed and duration. This creates a random flow cycle similar to what you would find in a natural reef.
- Feed: Press the 'FEED' button once, the blue '10min' light will illuminate indicating that the pump has been stopped for 10 minutes. When the time has elapsed, the light will go off and the pump will be turned back on. Alternatively, press the 'FEED' button again to start the pump.
- Lock: To prevent changes from inadvertently occurring by accidentally knocking the adjustable control knob, press and hold the 'FEED' button for 5 seconds. The red 'LOCK' light will illuminate and the control knob will no longer function. Press and hold the 'LOCK' light for a further 5 seconds to disable this feature.
- SPEED/LOCK: Press the "SPEED/LOCK" button to select the speed under mode of W1.
 - S1: Maximal speed
 - S2: 75% of Maximal speed
 - S3: 50% Maximal speed

To prevent changes from inadvertently, press and hold the SPEED/LOCK button for 5 seconds to lock the speed, press and hold for further 5 seconds to disable this feature.

- Night: When the two-pinned light sensor is inserted into the small socket on the left-hand side of the control box, Night mode will function automatically. The sensor detects when the tank lights go out and slows the pump to half speed. The 'Sensor' light will illuminate when Night mode is in operation. To disable the Night mode function, remove the sensor from the control box.
- Night mode is a feature intended for use with low output lighting. The sensor can become damaged when used with high output lighting such as VHO, HQI and LED lighting systems. Customers using the sensor with high output lighting do so at their own risk. The sensor is not covered by the manufacturer's warranty if used with high output lighting.

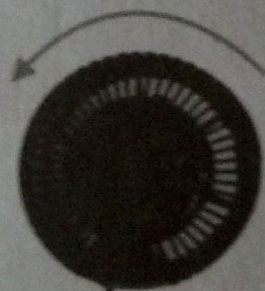
Maintenance:

- Regularly clean the outer parts to ensure effective action
- Use a dry cloth to prevent water from entering the controller box
- To disassemble the wave maker for cleaning - disconnect power, remove the pump from the cradle and whilst holding the rear section of the pump turn the front grid by rotating it clockwise - see images below:

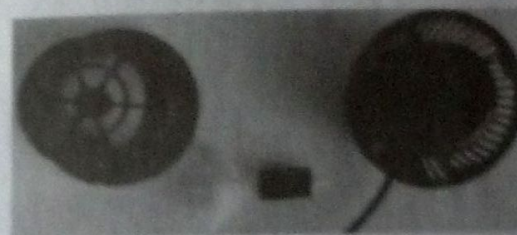


Front grid to remove

Hold this section firmly



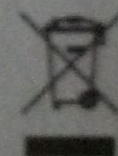
Rotate front section
anti clockwise



Pump disassembled

- To re assemble, reverse the disassembly instructions. Be sure when fitting the front grid that the ceramic shaft is located into the bearing. Once in position, turn the front grid clockwise until you hear a loud click, indicating that the pump is assembled correctly.

Disposal: Do not dispose this product as unsorted municipal waste. Collection of such waste separately for special treatment is necessary.



Jebao Co., Ltd.
Tongmao Industrial Park, Dongsheng, Zhongshan, Guangdong, China
Email: info@jebao.com
Website: www.jebao.com
Tel: +86-760-22212306, 22212307
Fax: +86-760-22212368